

Table of Contents

Page no

Page no

34	Chapter 3 - Review Questions	66
35	Microscope Observations - Plant + Animal Cells	
36	How are Organisms Classified	
37	Rotifers and Amoebas	
38	Paramecia and Euklena Observations	
39	Comparing Plant and Animal cells	
40	Notebook quiz #3	
41	How living things are structured	
43	^{less} _{introduction} Moving through the Digestive Tract	
46	Lesson 3 Exploring Carbohydrates	
49	Nutrients Reading Assignment pp 20-21	
50	Spirs-Into the System, Kdg. pp 30-31	
52	Lesson 4 - Digestion in the Mouth	
48	SS. 3.1a Food Testing Data Sheet	
53	^{Lab} Exploring Chemical Digestion in the Mouth	
54	Science Notebook Check Quiz #4	
55	Lesson 5 - Digestion in the Stomach	
58	Lab 5: Percentage of Egg mass loss - Data Sheet	
59	Lesson 5 Reading Assignment	
64	Notebook Check Quiz #5	
65	Notebook Check Quiz #6	

*Wonderful Work!
I always enjoy reading
your notebook!*

Inquiry 11.1
Measuring Forces on a Cart on an Inclined Plane

*Thank you
for the great effort*

Question/ Prediction 5 Points <i>5</i>	<ul style="list-style-type: none"> ✓ There is a complete question that goes along with the inquiry. Prediction includes: <ul style="list-style-type: none"> ✓ What's being changed ✓ What's being measured ✓ Reason for a prediction (Why)
Data Table 5 Points <i>5</i>	Includes the following: <ul style="list-style-type: none"> ✓ Three trials for each test ✓ Data for different increments or holes ✓ Correct averages for each test ✓ Title for chart with column labels
Procedure 10 Points <i>8/10</i>	Includes: <ul style="list-style-type: none"> Enough detail to do the investigation Steps are organized and easy to read Has a materials list for investigation.
Graph of Data 10 Points <i>10</i>	Includes the following: <ul style="list-style-type: none"> X and y axis labels Equal increments between data Correct data points Title for graph
Total Points <i>28/30</i> <i>93%</i>	Comments: <ul style="list-style-type: none"> <i>Instead of recording data you may want to say record the effort force</i> <i>I like how you put the title on your data table</i>

Middle School Feedback Example #1

NGSS: PE	NGSS: DCI	NGSS: SEP	NGSS: CC	CCSS: ELA	CCSS: MATH
MS-PS2-2	PS2.A Forces and Motion	Planning and Carrying Out Investigations	Stability and Change	RST.6-8.1	7.EE.B.4

2/87

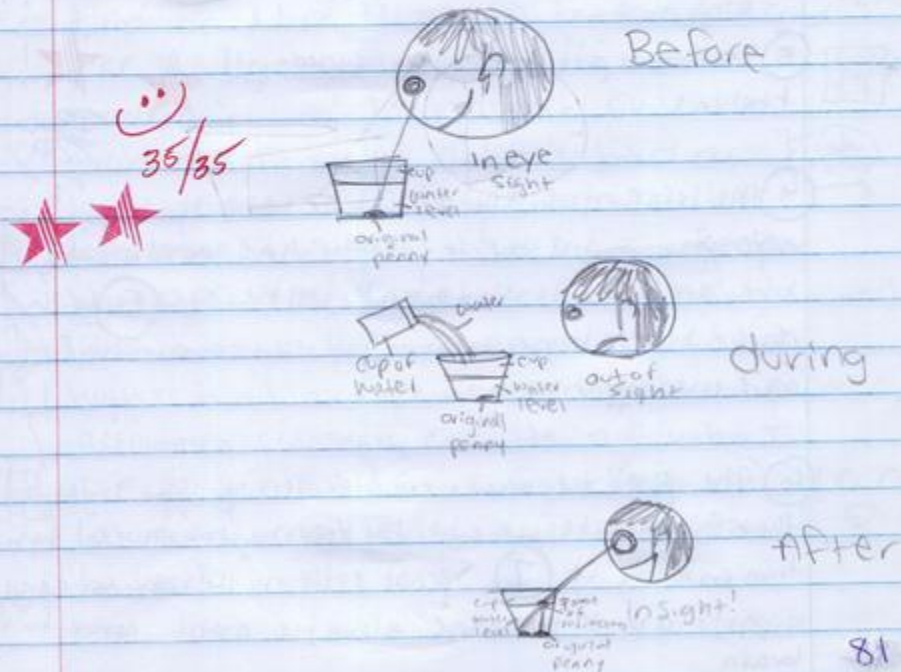
Properties of Light

4/26/07

- Light spreads out in all directions from its source.
- Light travels in straight lines called rays
- Light travels "at the speed of light" (186,282 mps)
- Light can travel in a vacuum

Refraction #2

4/26/07



Middle School Feedback Example #2

NGSS: PE	NGSS: DCI	NGSS: SEP	NGSS: CC	CCSS: ELA	CCSS: MATH
	PS4.B Electromagnetic Radiation	Planning and Carrying Out Investigations	Patterns	RST.6-8.7	MP.2